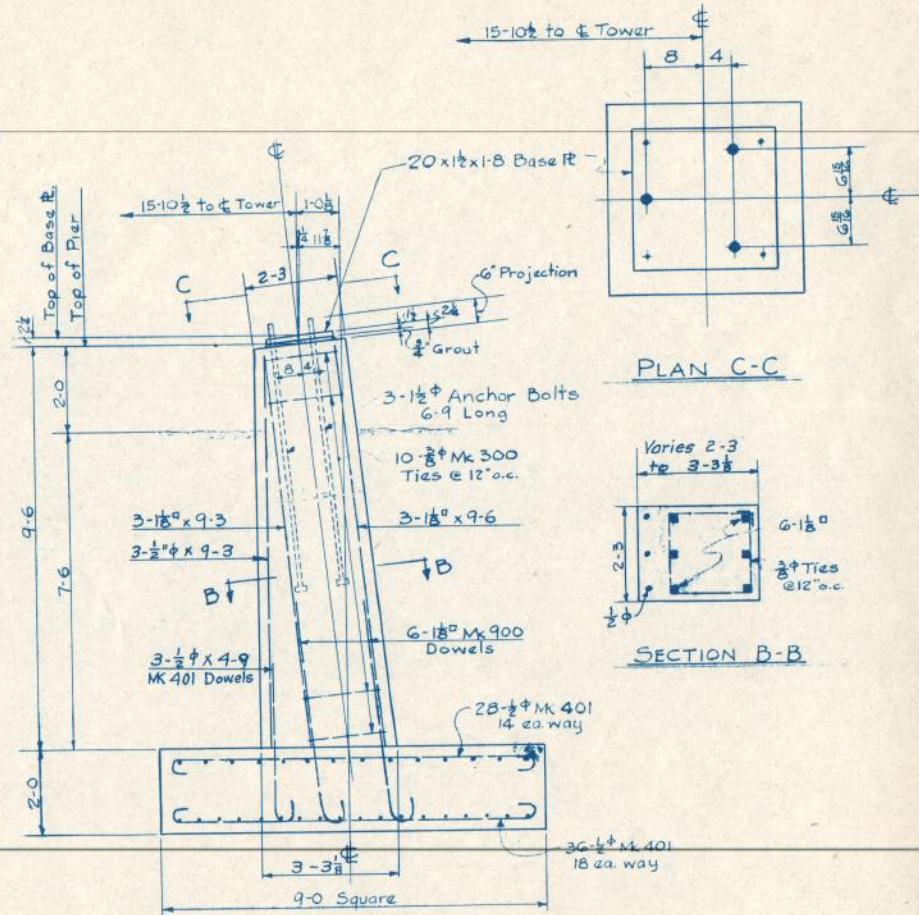


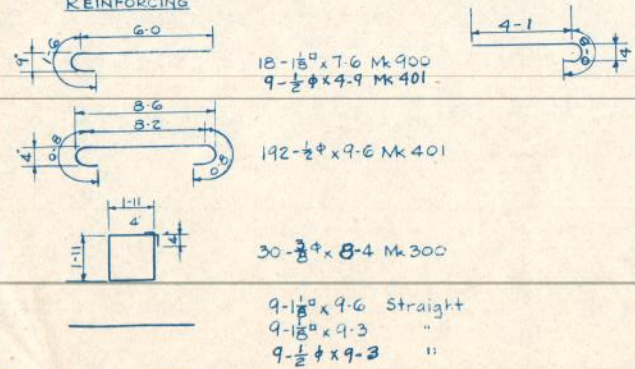
PLAN
396 FOOT TOWER BASE
ONE REQ'D.



ELEVATION A-A
3-REQ'D.

BILL OF MATERIAL

REINFORCING



NOTES:

Concrete shall be Class "A", "C" or "H".
All Reinforcing Steel shall be deformed bars.
The foundations as detailed herein contemplate a maximum safe soil bearing value of 2000 lbs. per sq. ft. After foundation pits have been excavated and before any work is started, the Engineer shall make a personal inspection of the pits. Should conditions encountered in the excavation indicate a maximum safe soil bearing value of less than 2000 lbs. per sq. ft., then work on the foundations shall be suspended pending a redesign.

QUANTITIES FOR ONE TOWER BASE

Excavation	152 Cu. Yds.
Class "A", "C" or "H" Concrete	24.56 Cu. Yds.
Reinforcing Steel	2702 Lbs.
Structural Steel	875 Lbs.

STATE OF NEBRASKA
DEPARTMENT OF ROADS & IRRIGATION
FOUNDATIONS FOR RADIO ANTENNA STRUCTURES
LINCOLN, NEBR. NOVEMBER 1945